

**Minidoka National Wildlife Refuge
Revised Plan for the South Side
Elk Hunt**

July 2020

U.S. Fish and Wildlife Service

**Minidoka National Wildlife Refuge
961 E Minidoka Dam Road
Rupert, ID 83350**

Submitted By:
Project Leader

Signature

Date

Concurrence:

Refuge
Supervisor

Signature

Date

Approved:

Regional Chief,
National Wildlife
Refuge System

Signature

Date

This page intentionally left blank.

Table of Contents

I.	Introduction	4
II.	Statement of Objectives	6
III.	Description of Hunting Program	6
	A. Areas to be Opened to Hunting.....	6
	B. Species to be Taken, Hunting Periods, Hunting Access.....	9
	C. Hunter Permit Requirements.....	10
	D. Consultation and Coordination with the State.....	11
	E. Law Enforcement.....	11
	F. Funding and Staffing Requirements.....	12
IV.	Conduct of the Hunt Program	12
	A. Hunter Permit Application, Selection, and/or Registration Procedures.....	12
	B. Refuge-Specific Regulations.....	12
	C. Relevant State Regulations.....	13
	D. Other Rules and Regulations for Hunters.....	14
V.	Public Engagement	14
	A. Outreach Plan for Announcing and Publicizing the Hunt.....	14
	B. Anticipated Public Reaction to the Hunting Program.....	14
	C. How the Public will be Informed of Relevant Rules and Regulations.....	15
VI.	Compatibility Determinations	15
	List of Maps	7
	Map A. Minidoka National Wildlife Refuge, Elk Hunting--South Side Hunt Units.....	8

MINIDOKA NATIONAL WILDLIFE REFUGE REVISED PLAN FOR THE SOUTH SIDE ELK HUNTS

I. Introduction

National wildlife refuges are guided by the mission and goals of the National Wildlife Refuge System (NWRS), the purposes of an individual refuge, U.S. Fish and Wildlife Service (Service) policy, and laws and international treaties. Relevant guidance includes the National Wildlife Refuge System Administration Act of 1966, as amended by the National Wildlife Refuge System Improvement Act of 1997, Refuge Recreation Act of 1962, and selected portions of the Code of Federal Regulations and Fish and Wildlife Service Manual.

Minidoka Wildlife Refuge was established in 1909 by President Theodore Roosevelt under Executive Order (E.O.) 1032. The Refuge was then modified by four subsequent E.O.s by President William H. Taft (E.O. 1486) on February 21, 1912, by President Herbert Hoover (E.O. 5375) on June 23, 1930, and President Franklin D. Roosevelt (E.O. 7417) on July 17, 1936. E.O. 7417 supersedes, through revocation, the three previous E.O.s. In 1940, President Franklin D. Roosevelt signed his second E.O. for Minidoka, E.O. 8600, changing the name of the Refuge from “Minidoka Wildlife Refuge” to “Minidoka National Wildlife Refuge” (NWR, Refuge) and adding 360 acres (withdrawn for reclamation purposes) to the Refuge boundary. The Refuge boundary has not been expanded since President Franklin D. Roosevelt issued E.O. 8600. The Refuge purpose is derived from Executive Order 7417:

“. . .as a refuge and breeding ground for birds and other wildlife” (*E.O. 7417 – Franklin D. Roosevelt, July 17, 1936*).

Minidoka NWR is located on the Snake River Plain in south-central Idaho, 12 miles northeast of Rupert in Minidoka, Blaine, Cassia, and Power Counties. The primary feature of the Refuge is Lake Walcott, the reservoir formed by the construction of the Minidoka Dam in 1906. The Refuge includes 80 miles of shoreline around Lake Walcott, from Minidoka Dam upstream about 25 miles. The Refuge encompasses a total of 20,752 acres. Most of the Refuge (17,923 acres) represents a secondary withdrawal encompassing Lake Walcott and surrounding lands. The primary withdrawal is controlled by the U.S. Bureau of Reclamation (BOR) and managed primarily for irrigation purposes (Minidoka Project). The Minidoka Dam, power plant, irrigation canals, and Lake Walcott water levels are all managed by BOR. Service management of public use on overlay Refuge lands, where the Service has secondary jurisdiction, is governed by a Cooperative Agreement with BOR (1964, amended 1976). Minidoka NWR is one of a handful of refuges with a state park on Refuge-controlled lands: Lake Walcott State Park. The park (originally “Walcott Park”) was managed by the BOR for much of its history. In 1996, the Idaho Legislature authorized the Idaho Park Board to enter into an agreement with the BOR for the operation of recreational facilities at Lake Walcott, which became known as Lake Walcott State Park. The park provides the public with picnic, camping, and boat launch facilities.

About half of the Refuge (11,300 acres) contain the open waters of Lake Walcott, the Snake River, and some small marsh areas. Uplands surrounding the lake are primarily sagebrush-steppe (approximately 3,500 acres) and grasslands (approximately 5,900 acres). The Refuge is surrounded primarily by Bureau of Land Management (BLM) lands; however, in certain areas, including the Refuge's East Hunt Unit, private lands lie adjacent to the Refuge boundary.

Areas of high quality submergent aquatic vegetation (SAV) occur in the sanctuary area on the eastern side of the Refuge, which is closed to boating. This is a locally important molting area for geese and ducks. Tens of thousands ducks and geese use this portion of the Refuge as a safe haven during this flightless period (early July through September). Historically, peak populations of 100,000 molting waterfowl have been recorded, but recent highs have been about half that number. The SAV beds are important nesting sites for western and Clark's grebes, one of only three nesting sites for both species in Idaho. Several islands on the Refuge provide habitat for colonial nesting birds, including gulls, black-crowned night-herons, egrets, and one of only three nesting colonies of American white pelicans in the state of Idaho.

The mission of the NWRS, as outlined by the National Wildlife Refuge System Administration Act (NWRSA), as amended by the National Wildlife Refuge System Improvement Act (16 U.S.C. 668dd et seq.), is to:

"... to administer a national network of lands and waters for the conservation, management and, where appropriate, restoration of the fish, wildlife, and plant resources and their habitats within the United States for the benefit of present and future generations of Americans."

The NWRSA mandates the Secretary of the Interior in administering the System to (16 U.S.C. 668dd(a)(4):

- Provide for the conservation of fish, wildlife, and plants, and their habitats within the NWRS;
- Ensure that the biological integrity, diversity, and environmental health of the NWRS are maintained for the benefit of present and future generations of Americans;
- Ensure that the mission of the NWRS described at 16 U.S.C. 668dd(a)(2) and the purposes of each refuge are carried out;
- Ensure effective coordination, interaction, and cooperation with owners of land adjoining refuges and the fish and wildlife agency of the states in which the units of the NWRS are located;
- Assist in the maintenance of adequate water quantity and water quality to fulfill the mission of the NWRS and the purposes of each refuge;
- Recognize, compatible wildlife-dependent, recreational uses as the priority general public uses of the NWRS through which the American public can develop an appreciation for fish and wildlife;
- Ensure that opportunities are provided within the NWRS for compatible wildlife-dependent recreational uses; and
- Monitor the status and trends of fish, wildlife, and plants in each refuge.

Therefore, it is a priority of the Service to provide for wildlife-dependent recreation opportunities, including hunting and fishing, when those opportunities are compatible with the purposes for which the refuge was established and the mission of the National Wildlife Refuge System.

The Refuge was opened to waterfowl and upland game bird (pheasant and partridge) hunting in 1965. The Refuge currently has two designated hunting areas: the West Hunt Area on the western side of the Refuge south of Lake Walcott, and the East Hunt Area on the eastern end of the Refuge around Tule Island. These areas are currently open to the hunting of migratory birds (duck, goose, coot, and snipe) and upland game (pheasant, partridge, and cottontail rabbit) in accordance with state seasons and regulations. In addition, the portion of the Refuge's East Hunt Area south of the Snake River is also open to elk hunting (archery only). Hunting of upland game may occur on the Refuge only if the Idaho season for those species is open concurrently with the waterfowl season. The Refuge is currently closed to all hunting once the Idaho waterfowl season is closed. We propose to expand the area of the Refuge south of the Snake River that is open to elk hunting from the current 300 acres to 1,109 acres, and expand allowable methods of take from archery only, to all weapons allowed under State regulations. In conjunction with this revised plan, we have prepared a Supplemental Environmental Assessment (SEA) to analyze effects of the proposed expansion on the human environment.

II. Statement of Objectives

The objectives of an elk hunting program on Minidoka NWR are:

- To provide compatible wildlife-dependent recreational opportunities as mandated by and according to Service law and policy;
- To provide additional hunting opportunities and greater alignment with the state as mandated by Secretarial Orders Number 3347 and 3356; and
- To provide the state with a strategy to maintain elk numbers at levels which limit agricultural damage yet provide a desirable hunting opportunity and experience.

III. Description of Hunting Program

A. Areas to be Opened to Hunting

Elk hunting currently occurs on the mainland portion of the Refuge's East Hunt Area (lands lying to the south of the Snake River). The East Hunt Area comprises approximately 1,094 acres that includes the north and south banks of the Snake River, approximately 2.25 river miles of the Snake River/Lake Walcott, and Tule Island. The mainland portion of the unit south of the Snake River, where elk hunting is allowed, is 300 acres. The unit is bounded by the east, north, and south boundaries of the Refuge, extends approximately 2.25 miles west from the Refuge's eastern boundary. The unit contains sagebrush-steppe, juniper woodland, riparian habitat, emergent wetland, and open water habitat.

We propose to expand the current elk hunt area south of the Snake River (300 acres) westward

to the Raft River Bay and Raft River. We propose to split the current East Hunt Unit into two units: the East Hunt Area (580 acres), which would include lands and waters north of the south bank of the Snake River, and the East Hunt Area-South (421 acres), which would include lands south of the south bank of the Snake River, east to the Refuge's eastern boundary, and west to the Cassia/Power County line. The East Hunt Area would remain closed to elk hunting. Elk hunting would be expanded on the East Hunt Area-South from archery only, to all weapons allowed under Idaho Department of Fish and Game (IDFG) regulations. Both the East Hunt Unit and the East Hunt Unit-South are currently open to limited sport hunting for ducks, geese, coots, snipe, pheasants, partridge, and cottontail rabbits; this would remain unchanged. We propose to create a new 687-acre hunt unit, the Raft River Hunt Area, which would lie south of the south bank of the Snake River and extend from the east side of Raft River Bay and Raft River, to the Cassia/Power County line. We propose to open this area to elk hunting. The total area of the Refuge south of the Snake River that would be open to elk hunting would be 1,109 acres, an increase of 809 acres.

See attached Map:

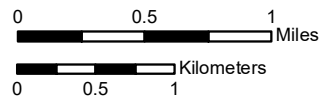
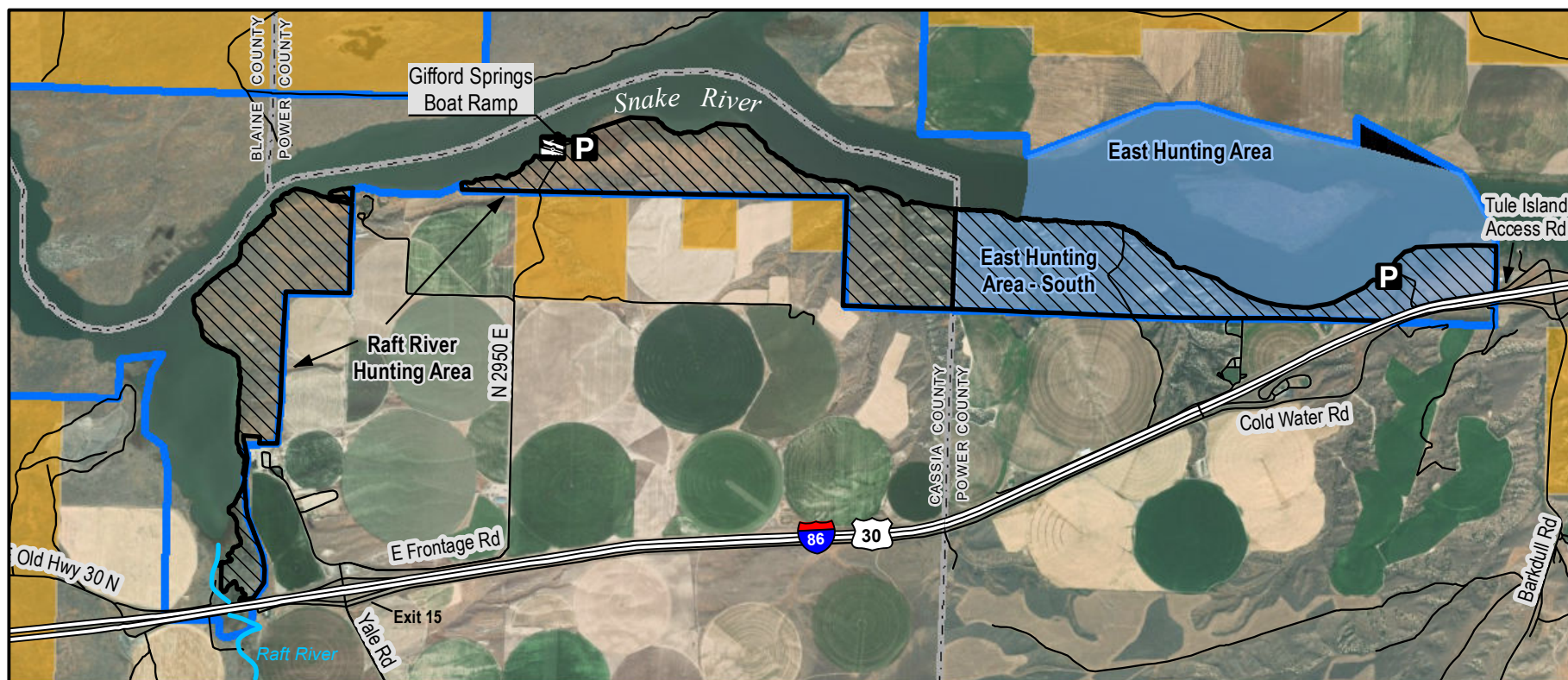
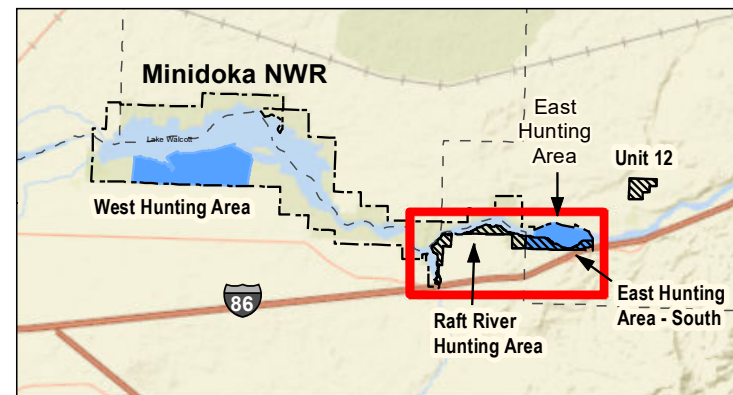
Map A – Minidoka NWR, Elk Hunting - South Side Hunt Units



Minidoka National Wildlife Refuge - South Side Elk Hunt Areas

- Approved Refuge Boundary
- Open to elk hunting under State seasons and regulations*
- Open to waterfowl, upland game bird, cottontail hunting under State seasons and regulations*
- Bureau of Land Management

*Subject to additional restrictions under Refuge specific regulations. Hunters must obtain permission to cross private lands to access Refuge hunt areas.



B. Species to be Taken, Hunting periods, Hunting Access

BIG GAME HUNTING: Elk hunting would occur on the Refuge's East Hunt Area-South (421 acres), which lies within Power County (GMU 68 of the Big Desert Zone), and the Raft River Hunt Area (687 acres), which lies within Cassia County (GMU 53 of the Snake River Zone), in accordance with IDFG seasons and regulations for these zones. Because the East Hunt Area-South and the Raft River Hunt Area lie within different IDFG zones and GMUs, seasons and regulations for elk hunting are different in these two Refuge hunt units. For clarity we are providing a description of current IDFG hunts that would occur on the Refuge hunt units, although dates may change in the future.

- 1) General A Tag Archery Hunt: The archery hunt would be part of the Elk "A" Tag for Unit 68 in the Big Desert Zone hunt as described by IDFG. Idaho Department of Fish and Game does not limit the number of archery elk tags in the Big Desert Zone. The archery hunt is for either sex elk. Both General "A" Tag archery hunts would be allowed on the Refuge. Hunt dates in 2019 were from August 1 to August 30 and August 30 to September 30, although IDFG may change those dates in the future. The August 1–30 hunt is specifically address crop damage and the only areas of GMU 68 that can be hunted are those that are within one mile of agricultural fields, which includes all of the East Hunt Unit-South. In the August 30 to September 30 hunt, period all of GMU 68 can be hunted.
- 2) The State controlled antlered hunt for controlled hunt area 52A-1 (any weapon--rifle, archery, muzzleloader, shotgun, or handgun). The State issues 75 tags annually for this hunt. Hunt dates in 2019 were from October 1 through November 30.
- 3) The State controlled antlerless hunt for Unit 68 (any weapon--rifle, archery, muzzleloader, shotgun, or handgun). The State issues 75 tags annually for this hunt. Hunt dates in 2019 were from October 10 through November 30.

One hunt would occur on the Raft River Hunt Area, the IDFG Snake River Zone hunt for GMU 53 (short range weapons--muzzleloader, archery, crossbow, shotgun or handgun). This hunt is for either-sex elk. Idaho Department of Fish and Game does not limit the number of elk tags in the Snake River Zone. Hunt dates in 2019 were from August 1 through December 31.

The archery-only hunt will occur only in the East Hunt Area-South (421 acres). Since all of the East Hunt Area-South lies within 1 mile of cultivated fields on private lands, the entire elk hunting area will be open to hunting from August 1 through August 30 and August 30 – Sept 30. The East Hunt Area, which includes the area north of the south bank of the Snake River, including Tule Island, will remain closed to elk hunting.

Elk hunters may enter the East Hunt Area-South and the Raft River Hunt Area from one and one-half hours before legal hunting time to one and one-half hours after legal hunting time (legal hunting time under state regulations is one-half hour before sunrise to one-half hour after sunset).

Access to the East Hunt Area-South will be provided at the Coldwater parking area (Parking Area G), at the end of the Tule Island Access Road, which can be accessed from Barkdull Road (Exit 21 off Interstate 86). The Raft River Hunt Area can be accessed via Exit 15/Raft River on Interstate 86, to County Road N 2950 E, which leads to the Gifford Springs boat ramp. All other areas require access through private land (landowner permission) before reaching the Refuge. Hunters will self-navigate to their location on foot; vehicles are prohibited off-road. Elk hunters will not be allowed to use boats to access the hunt areas.

C. Hunter Permit Requirements

Elk hunters must comply with all applicable IDFG regulations. Under current regulations, elk hunters must carry a valid Idaho hunting license with an archery or muzzleloader permit validation if these weapons are used, and elk tags issued by IDFG. Participants in controlled hunts must have a valid controlled hunt tag in their possession. No Refuge permit is required.

D. Consultation and Coordination with the State

IDFG sent a letter dated November 27, 2017 to the Service's Regional Director requesting that the Service consider an elk hunt in the eastern area of Minidoka NWR. In 2018, Refuge staff reviewed Idaho state hunting framework and regulations to find consistency where possible. IDFG's recommendations were used as the foundation for this hunt plan and the proposed alternative in this EA.

Refuge staff contacted IDFG letting them know that the Service proposed to open the Refuge to elk hunting, as well as extend the boating season to enhance fishing opportunities. IDFG's Region 4 and Region 5 Supervisors were given advance copies of the Draft Hunt Plan and EA and were invited to provide comments, prior to issuance of the Draft Hunt Plan and EA for public comment.

On July 23, 2019, FWS regional senior staff, including the ARD-Refuge and Southeast Idaho National Wildlife Refuge Complex Project Leader Tracy Casselman, had a hunting and fishing coordination meeting with the IDFG's leadership team. IDFG leadership present at the coordination meeting included the Director, Deputy Director, Wildlife Chief, Fisheries Chief, Region Manager, support staff, and an Association of Fish and Wildlife Agencies (AFWA) Governmental Affairs representative. The IDFG leadership team outlined the State's priorities, and the Service and IDFG came to mutual agreement on phasing of hunting and fishing openings and expansions on Idaho National Wildlife Refuges, including expanding elk hunting on Minidoka NWR for the 2020-21 season. IDFG Region 4 (Magic Valley) and Region 5 (Southeast) Supervisors were given an advance copy of this Draft SEA and Revised Hunt Plan and were invited to provide comments, prior to issuance of the Draft Revised Hunt Plan and SEA for public comment.

Minidoka NWR and the IDFG will continue to work together to ensure safe and enjoyable recreational hunting opportunities. Hunter participation and harvest data are collected by the state, and law enforcement officers from both the Complex and IDFG work together to patrol the East Hunt Unit, safeguarding hunters, visitors, and both game and nongame species.

E. Law Enforcement

Enforcement of Refuge violations normally associated with management of a national wildlife refuge is the responsibility of commissioned Federal Wildlife Officers (FWOs). The Complex currently has one FWO. Other officers, special agents, state game wardens, and the local Sheriff's Department often assist the Complex's full time federal wildlife officers.

The following methods are used to control and enforce hunting regulations:

- Refuge and hunt area boundaries will be clearly posted;
- The Refuge will provide a hunting brochure that shows hunt areas;
- Southeast Idaho National Wildlife Refuge Complex law enforcement staff will randomly check hunters for compliance with federal and state Laws.

F. Funding and Staffing Requirements

The Refuge is administered by the Complex (Complex), which also administers the Deer Flat, Camas, Bear Lake, and Grays Lake National Wildlife Refuges. Only the Refuge Manager and Wildlife Biologist are stationed at Minidoka NWR; they are responsible for day-to-day operations. Personnel stationed at Complex headquarters, located in Chubbuck, Idaho, support Minidoka NWR and other refuges in the Complex. The distance of the Refuge to shared staff can present logistical challenges. However, they can be minimized by incorporating the management of the elk hunt into existing hunt programs currently in place within the Complex.

Given that the proposed elk hunts fall within the state hunting framework which is managed by IDFG, the elk hunts will require relatively little oversight from Refuge staff. Some costs associated with the elk hunt will be shared with the existing hunt programs (e.g., maintenance of road and parking area). Estimated costs to implement the hunt are approximately \$4,000.00 annually to cover staff time needed to consult and coordinate with the state and to cover costs of additional law enforcement patrols to enforce hunting regulations, and \$10,000 in one-time costs to for new brochures and signs. There are currently enough funds in Refuge operations to implement this program.

IV. Conduct of the Hunting Program

A. Hunter Permit Application, Selection, and/or Registration Procedures

Elk hunting would be permitted in accordance with all state regulations (see <https://idfg.idaho.gov/sites/default/files/seasons-rules-big-game-2019-2020.pdf>) and special Refuge regulations. No Refuge permit is required at this time.

B. Refuge-Specific Hunting Regulations

Listed below are Refuge-specific regulations that pertain to hunting on Minidoka NWR as of the date of this plan and including the expanded elk hunt described in this plan (50 CFR 32.31). These regulations may be modified as conditions change or if Refuge expansion occurs.

Big Game Hunting. We allow hunting of deer and elk in designated areas of the refuge subject to the following condition: Deer and elk hunters may enter the hunt area from one and one-half hours before legal hunting time to one and one-half hours after legal hunting time.

C. Relevant State Regulations

IDFG: Hunting of elk is permitted during Idaho general A tag season for GMU 68 in the Big Desert Zone, controlled hunt seasons for GMUs 68 and 52A-1, and the Idaho general A tag season for GMU 53 in the Snake River Zone.

For more information see:

Elk A Tag-Big Desert Zone: <https://idfg.idaho.gov/ifwis/huntplanner/hunt/57895>

Elk Controlled Hunt 2036: <https://idfg.idaho.gov/ifwis/huntplanner/hunt/58719>

Elk Controlled Hunt 2114: <https://idfg.idaho.gov/ifwis/huntplanner/hunt/58797>

Elk A Tag-Snake River Zone: <https://idfg.idaho.gov/ifwis/huntplanner/tag/21968>

Idaho Big Game Rules (For complete rules see

<https://idfg.idaho.gov/sites/default/files/seasons-rules-big-game-2019-2020.pdf>)

Hunting Hours

Big game animals may be hunted only from one-half hour before sunrise to one-half hour after sunset.

Mandatory Report Requirements

All deer, elk, and pronghorn hunters are required to complete a Mandatory Hunter Report for each tag they purchase. Hunters are required to submit a report by phone or internet within 10 days after harvest. Hunters who do not harvest, or did not hunt with their tag, are required to report within 10 days after the close of the hunting season.

Archery Only Season

Any person hunting in an archery-only season, including controlled hunts, must have in their possession their license with archery permit validation. During an archery-only season, it is illegal for hunters to use any firearm or implement other than a longbow, compound bow, or recurve bow in compliance with general archery equipment requirements or:

-Any bow equipped with magnifying sights.

-Any device that holds a bow at partial or full draw. Except hunters possessing a disabled archery permit may use a device that holds a bow at partial or full draw. Applications for the use of devices holding a bow at partial or full draw by disabled hunters are available at Fish and Game offices.

-Any crossbow. Except disabled hunters possessing a permit may use a crossbow.

Applications for the use of crossbows by disabled hunters are available at Fish and Game offices.

D. Other Refuge Rules and Regulations for Hunting

Information for Minidoka NWR hunting is listed below and/or can be downloaded from the Minidoka NWR website:

https://www.fws.gov/refuge/Minidoka/visit/rules_and_regulations.html

- The Tule Island Access Road is open to vehicles only during the state GMU 53 and 68 elk archery season and waterfowl hunting seasons. Foot travel is permitted year-round.

- Big game hunters may enter the Refuge one and one-half hours before shooting time begins and must leave within one and one-half hours after shooting time ceases, unless retrieving deer or elk.
- Refuge hunting hours for deer and elk will coincide with the IDFG hunting defined state hours for big game, currently one-half hour before sunrise to one-half hour after sunset.
- Firearms may only be discharged in accordance with Refuge hunting regulations, i.e., only during the lawful pursuit of game during legal seasons.
- Personal property, including portable blinds and tree stands, must be removed from the Refuge at the end of each day.
- No dogs are allowed for big game hunting activities.
- Hunters (or designated assistants of mobility impaired hunters) must be accompanied by Refuge staff or trained volunteer when entering areas of the Refuge that are closed to hunting in order to retrieve deer or elk.
- Cutting of live vegetation for blinds or shooting lanes is prohibited.
- Open fires and fireworks are not allowed at any time.
- Camping is prohibited on the Refuge, except in Lake Walcott State Park.
- Collecting natural objects such as plants, animals, minerals, antlers, and feathers, and objects of antiquity (including Native American artifacts, such as arrowheads) is prohibited.
- Off road travel by vehicles, ATVs/UTVs and horses is prohibited.
- Boating, in areas closed to boating, is prohibited (see Refuge public use map at <http://cmsstage.fws.doi.net/uploadedFiles/Minidoka%20Map.pdf#a>)
- The Tule Island Access Road is open to vehicles only during the state elk and waterfowl hunting seasons; foot travel is permitted year-round.

V. Public Engagement

A. Outreach for Announcing and Publicizing the Hunting Program

The Complex maintains a mailing list, for news release purposes, to local newspapers, radio, and websites. Special announcements and articles may be released in conjunction with hunting seasons. In addition, information about the hunt will be available at the Complex office, the Minidoka NWR headquarters, and on the Minidoka NWR website www.fws.gov/refuge/Minidoka/.

B. Anticipated Public Reaction to the Hunting Program

Waterfowl and upland game hunting is already established at Minidoka NWR. An archery-only elk hunt was added in 2019. Most of the Refuge is surrounded by BLM lands where hunting under state regulations is currently allowed; however, private farms and ranches are adjacent to the Refuge in the Raft River and Coldwater areas. The Refuge's East Hunt Area-South lies within Idaho's Game Management Unit (GMU) 68 of the Big Desert Zone (Power County), while the Raft River Hunt Area lies within GMU 53 in the Snake River Zone (Cassia County).

In this unit, elk are managed to maintain numbers at levels which limit agricultural damage yet provide a desirable hunting opportunity and experience (see <https://idfg.idaho.gov/sites/default/files/seasons-rules-big-game-2019-2020.pdf>). In recent years, elk numbers have increased in the Coldwater area, causing damage to crops on private lands surrounding the Refuge. IDFG estimates that the herd in this area currently numbers 50-60 animals; however, weekly elk surveys of area between Raft River and the Refuge's eastern boundary indicates low elk use of this area from August to December (a high count of 7 and a mean of less than 1; Ty Matthews, SE Idaho NWRC Biologist, pers. comm). They appear to winter south of Interstate 86 and utilize the Refuge as a migration corridor between agricultural fields and bedding areas. Neighboring landowners have had few to no elk depredation issues and are neutral to the proposed elk hunt. Big game hunting (for deer, elk, and pronghorn) occurs on BLM lands adjacent to the Refuge, and is generally accepted locally and does not typically generate anti-hunting controversy. We also anticipate favorable reaction to the addition of elk hunting as an added recreational opportunity for the public. The Shoshone-Bannock Tribes oppose expanding hunting opportunities on the Refuge due to concern over looting and vandalism of cultural resources.

Nationally, there is a component of the population that is opposed to hunting, and some organizations are opposed to hunting, or at least the expansion of hunting, on national wildlife refuges and other public lands. However, we feel confident that the proposed expansion of elk hunting on Minidoka NWR will be supported by the local community.

C. How Hunters Will Be Informed of Relevant Rules and Regulations

General information regarding hunting, regulations, maps, and other wildlife-dependent public uses can be obtained at the Complex Headquarters at 4425 Burley Drive Suite A, Chubbuck, Idaho 83202 or by calling 208-237-6615 or the Minidoka NWR Headquarters 961 E Minidoka Dam Road, Rupert, Idaho 83350 or by calling (208) 436-3589. Hunting regulations and maps are also available on the Minidoka NWR website:

<https://www.fws.gov/refuge/minidoka/>. Staff fills brochure boxes located on Minidoka NWR.

IDFG hunting information is available at the office located at 324 417 E #1, Jerome, ID 83338 or by calling (208) 324-4359. Hunting resources are also available on their website at: <https://idfg.idaho.gov/hunt>.

VI. Compatibility Determination

Hunting and all associated program activities proposed in this plan are compatible with the purposes of the Refuge. See attached Revised Compatibility Determination for Big Game Hunting, Minidoka NWR.