

**Note to file****Crab Orchard National Wildlife Refuge Hunt Plan Minor Amendment**

The refuge is no longer administering a controlled waterfowl hunt. The refuge will be opened to state regulations for waterfowl hunting and no longer require a waterfowl draw. To do this the refuge combined the formally known "controlled waterfowl unit" with the "open hunt unit" (2740 acres) and the new "Carterville Unit" (266 acres). The previously known "waterfowl controlled unit" consists of approximately 2,100 acres of water and 900 acres of land. In the 1970s the refuge established 40 waterfowl hunting blinds in this area and controlled them with a daily drawing during the waterfowl season. In 1997 the land units were closed to firearm deer hunting to reduce hunter conflict between waterfowl hunter and deer hunters. Due to the fact that migratory waterfowl (Canada Geese) population trends have significantly decreased over the decade the refuge has removed all the hunting blinds on the land units. The 2740 acres being added to the "Open unit" will reopen to firearm deer hunting. This area is already open to archery deer hunting this amendment would add an additional seven day of deer hunting.

The refuge is also proposing to open 12,100 acres of the "special permit hunt unit" to deer hunting with archery equipment. This area is currently open to firearm deer hunting in accordance with existing state seasons. This amendment would allow a 15 day archery deer hunting season in the restricted use area south of Crab Orchard Lake also referred to as special permit hunting unit. Deer hunting would be accordance with existing State, local, and refuge-specific regulations (50 CFR 32.32) and will not require a special permit.

This amendment is compatible with the purposes for which the refuge was established and the mission of the National Wildlife Refuge System. This amendment updates the 2019 Hunt Plan and the map attached updates the hunt unit map in that plan. Additionally, minor amendment to the Comprehensive Conservation Plan memo was completed as part of this process.

**Submitted by:**

Refuge Manager Signature and Date

**Concurrence:**

Refuge Supervisor Signature and Date

**Approval:**

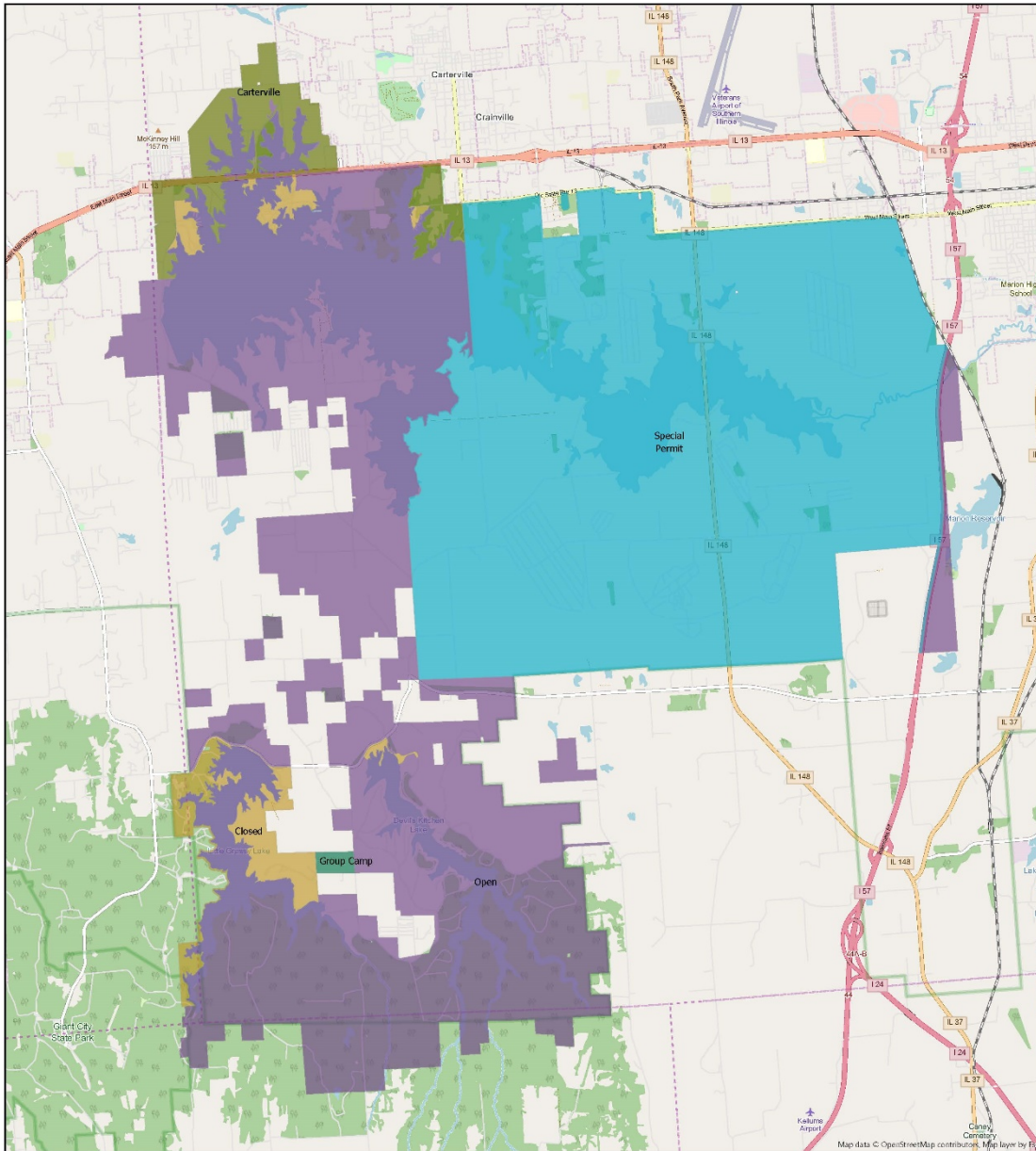
Regional Refuge Chief Signature and Date

# Crab Orchard National Wildlife Refuge Hunt Map Amendment

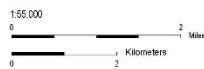


U.S. Fish & Wildlife Service  
Crab Orchard National Wildlife Refuge

Hunt Units



Produced by the Division of Natural Resource Conservation Planning  
Bloomington, Minnesota  
Produced January 21, 2020  
Basemap: ESRI Open Street Map  
File: ANSI C-Size\_Portrait\_HuntUnit.aprx



The USFWS makes no warranty for use of this map and cannot be held liable for actions or decisions based on map content.

This map is used to identify the open and closed areas for hunting on U.S. Fish and Wildlife Service lands. Units will be posted open or closed with boundary signs. The U.S. Fish and Wildlife Hunt Unit layer was used to create these maps.

Map image is the intellectual property of Esri and is used herein under license.  
Copyright © 2019 Esri and its licensors. All rights reserved.



Datum: NAD 83